



Overton Industries

RUBY SERIES

Ruby Spin-Trim



Tube Size Capability:

1" O.D. - 3" O.D.

Wall thickness:

Up to 0.083"

Applications:

Beading | Flaring |
Trimming

Operator Interface:

Allen-Bradley 7" HMI
Screen

Form and cut tubes on the same machine with a quick tooling change, and keep the area clean with a built-in scrap ejection system.

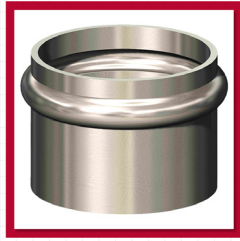
Machine Features

- ✓ High Quality, Durable Steel Frame
- ✓ Allen-Bradley Micro800 Controls
- ✓ Dual Lite-Touch Buttons For Cycle
- ✓ E-Stop Button
- ✓ NEMA Control Box With External Disconnect
- ✓ Proximity Switches For Open & Closed Positions
- ✓ Standard Color Powder Coating

Overton Industries Tube Forming Division
2155 McClain Drive, Franklin, IN 46131

317-736-7700 | overtonind.com/ruby

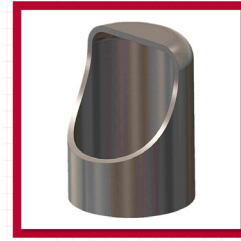
Tube Examples



Beading



Flaring



Closed Round

These forms are for demonstration purposes to show types of tubes that the Ruby Spin-Trim Machine makes. We also specialize in developing custom tube forming applications. For more information, please contact an engineer at Overton Industries - Tube Forming Systems at 317.736.7700.



Overton Industries Tube Forming Division
2155 McClain Drive, Franklin, IN 46131

317-736-7700 | overtonind.com/ruby